



Rotary Messenger

Rotary Club of Eau Claire

Editor: Jerry Reinecke

April 19, 2010

In This Issue

- Beaver Creek Reserve Update
- Rotary Club Donates to Beaver Creek Reserve

Make-ups

- Marje Bunce – Siren (4/15/2010)

Leaves of Absence

- Jeanne Chilson (1/25/2010 – 4/30/2010)
- Ron Dulitz (11/22/2009 – 5/10/2010)
- Peter Scobie (2/17/2010 – 5/11/2010)
- Dennis Vanden Bloomen (1/1/2010 – 5/31/2010)
- Dina St. Louis (1/1/2010 – 6/30/2010)
- Julie Pangallo (3/22/2010 – 6/30/2010)

The 4-Way Test

Of the things, we think, say or do:

1. Is it the 'Truth'?
2. Is it 'Fair' to all concerned?
3. Will it build 'Goodwill' and 'Better Friendships'?
4. Will it be 'Beneficial' to all?

Our Calendar

- April 26 – Health Insurance Update by Peter Farrow, General Manager and CEO of Group Health Cooperative of Eau Claire

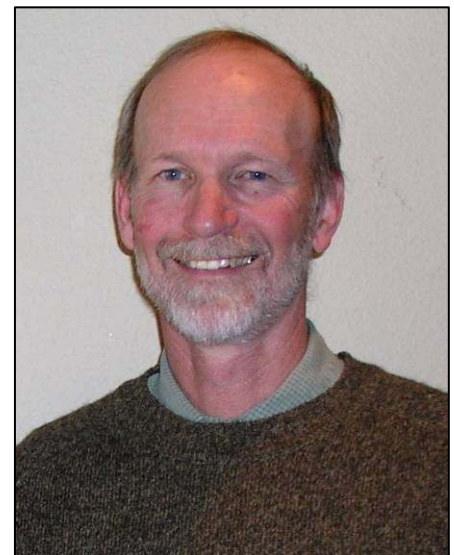
Beaver Creek Reserve Update by Director Rick Koziel

(Thank you to Bob Schmidt for providing this Program Summary)

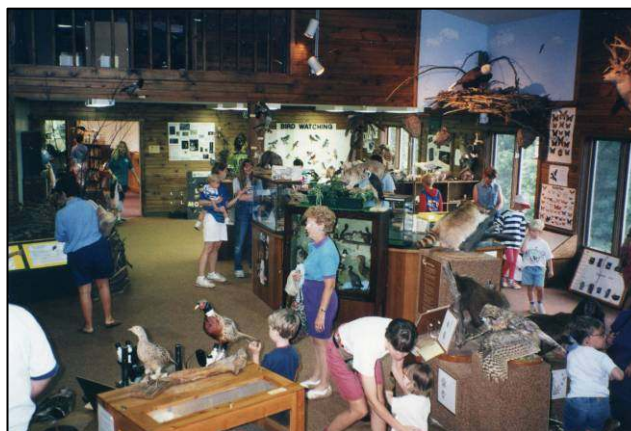
Rick Koziel, Director of Beaver Creek Reserve in Fall Creek, shared some historical facts about the organization.

In 1947, concerned citizens, wanting to provide youth opportunities to better understand and appreciate nature and conservation, obtained the support of the Eau Claire County Board of Supervisors, and 160 acres of tax delinquent land was set aside for the Eau Claire County Youth Camp and Conservation Center. Early work at the camp was done entirely through donations and volunteer labor. The Fall Creek Lions and other area service organizations were instrumental in the construction of the Main Lodge and sleeping cabins. The County Board of Supervisors became more involved in the 1970s when they financed construction of the caretaker's residence, the shower house and Cedar Lodge.

A grant from the Hobb's Foundation in 1979 allowed construction of the observatory. Another Hobbs grant allowed the Reserve to acquire a 24-inch reflective telescope from Edwards Air Force Base in California through the federal government's surplus property program.



Rick Koziel, Director of Beaver Creek Reserve



Inside Beaver Creek Reserve Nature Center

In 1985, the Wise Nature Center was completed after a successful fundraiser initiated by the Beaver Creek Reserve Commission and the Friends of Beaver Creek Reserve. The overwhelming success was evidence of the diverse support the Youth Camp had in the community. That same year, the name Beaver Creek Reserve was adopted to encompass the Youth Camp, Wise Nature

- May 3 – Group Study Exchange Team from Japan
- May 10 – Area Toastmasters Speech Contest Winner Barb Weissenberger Presents her Award Winning Speech
- May 17 – Our Exchange Student Kristina Skornikova
- May 21-22 – Rotary 6250 District Conference at LaCrosse Center
- May 24 – Junior League’s “Kids in the Kitchen” Program by Robin Shih
- May 31 – No meeting... Celebrate Memorial Day
- June 7 – Bolton Refuge House Update by Director Gerald Wilke

Officers/Board of Directors for the 2009-10 Rotary Year

- President – Jacqe Lahn
- President-Elect – Jon Niebergall
- Vice President – Sara Antonson
- Secretary – Mary Knight
- Exec Sec / Treas – Jerry Reinecke
- Past President – Don Huebscher
- Avenues of Service:
 - Club – Angela Hite
 - Community – Bob Schmidt
 - International – Mark Morse
 - Vocational – Marcia Van Beek

Contact Us

- Rotary Club of Eau Claire
P.O. Box 671
Eau Claire, WI 54702-0671
www.eauclairerotary.org
- Jacqe Lahn, President
715-836-9660
lahnaprl@sbcglobal.net
- Jerry Reinecke, Exec Sec & Treas
715-838-7640
jreinecke@bankmutual.com
- Rotary District 6250
www.rotary6250.org

Center and Hobbs Observatory.

The Citizen Science Center began with a pilot program of field research projects by students from area schools. This research yielded valuable scientific information as well as valuable environmental experience for the students. The Citizen Science Center grew out of the need for a facility



Beaver Creek Reserve Butterfly House

where this research could expand in scope, breadth and depth. In 2002, a major fund-raising campaign was undertaken by the Friends of Beaver Creek. Many area businesses and individuals pledged support of the new center. The building opened in 2004. The Citizen Science Center and its programs are currently self-supporting... funded by grants and contracts with area agencies. The Wildlands Charter School is housed in the Citizen Science Center September through May.

Today Beaver Creek Reserve is a leader in its educational mission and research in both the Chippewa Valley and the State of Wisconsin. Cooperative efforts between the Department of Natural Resources, the University of Wisconsin, and area school districts makes it the ideal place for the citizenry to learn more about “connecting with nature.”

For more information, go to www.beavercreekreserve.org.

Rotary Club Donates to Beaver Creek Reserve

About one year ago, the Friends of the Beaver Creek Reserve took over daily operations of the Beaver Creek Reserve, and like many nonprofit organizations, face economic challenges. As a result, the Friends must look to other community organizations, such as our Rotary Club, for support.

One of the many projects that the Friends are looking to complete is to repaint and epoxy the floor in the Main Lodge. Hundreds of events are held there each year which, over time, takes it toll on the condition and appearance of the floor.

Our Rotary Club believes in the mission of the Reserve, and is pleased to help by making a \$500 donation in support of the floor restoration project. At the conclusion of Mr. Koziel’s presentation, Club President **Jacqe Lahn** presented him with our check.



Rotary Club President **Jacqe Lahn** presents a \$500 check to Beaver Creek Reserve Director **Rick Koziel**